

Major Design, Operating, Marketing, and Sales Issues

Thermal-Electric Ratio:

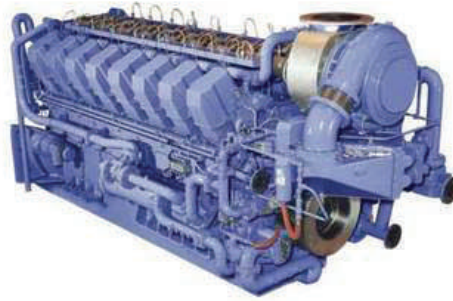
- Facility requirements should match with CHP equipment
- System is designed around thermal load
- Thermal loads are dynamic
- Electrical requirements must be considered
- Coordinating thermal and electrical energy use increases efficiency

Power-Cooling Ratio:

- Facility's P/C ratio should match CHP system
- Thermal energy may exceed cooling requirements
- Identifying additional thermal loads may be needed
- Selling energy outside the fence may be required to make the project economically feasible

Identifying New Markets:

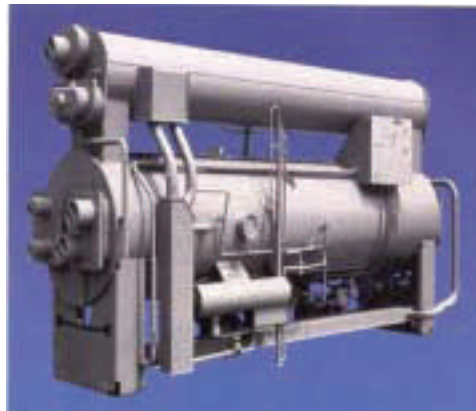
- Data Centers
- Schools
- Military Installations
- Office Spaces
- Industrial Settings
- Supermarkets
- Applications requiring large amounts of heating and cooling



*Internal
Combustion
Engine*

Examples of Distributed Generation Technologies

- Gas Turbines
- MicroTurbines
- Internal Combustion Engines
- Fuel Cells



*Single-
Effect
Absorption
Chiller*

Examples of Thermally-Activated HVAD Technologies

- Single-Effect Absorption Chiller
- Double-Effect Absorption Chiller
- Adsorption Chiller
- Desiccant Technologies
- Fuel Cells

For More Information Contact:
Southeast CHP Application Center
Tim Lupo
NC Solar Center
NC State University
919-513-4244
Tim_Lupo@ncsu.edu